



Beautiful, Energy Efficient Garden Rooms

Specification Guide | Version 1.0 | April 2021

Gardenrooms
By Ultraframe

Introducing

The Studio and The Pavilion

Easy to build in just one day, Ultraframe Garden Rooms are designed with familiar components that exceed Building Regulations for thermal performance with U-Values as low as 0.16. Unlike cedar clad garden rooms, Ultraframe Garden Rooms won't fade over time, thanks to their unique premium contemporary grey finish.



Dimensions: The Studio 3 Walls 3600mm x 4800mm



Dimensions: The Pavilion Right Hand Corner 3600mm x 4800mm

Easy and fast to build

Garden Rooms from Ultraframe are built with familiar Ultraframe components and accompanied with a high quality installation guide to ensure your installation runs smoothly. Using a pre-finished internal board on the interior negates the need for plastering, saving you time and money. The wall panels used are rapid to install thanks to the patented clip-fit mechanism.

High thermal performance

The components for an Ultraframe Garden Room are Building Regulation compliant for use in a home extension. In contrast, standard Garden Rooms are not required to reach this high level and will be more expensive to heat - they might even struggle to achieve a comfortable temperature in the colder months.

Available with or without fixed rooflights

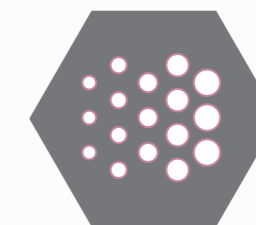
Most Garden Rooms treat fixed rooflight integration as an 'extra' which adds cost to the build. Whether you design your Garden Room with fixed rooflights or not the price is the same. You'll only pay extra for the glass. Plus the shaped glazing in the roof adds a unique design element to The Pavilion.

Short lead times

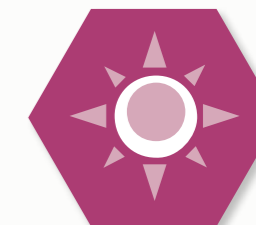
Ultraframe Garden Rooms are precision engineered off site in a high capacity factory. This means your garden room can be delivered within 10 days of your order.

Longer life span

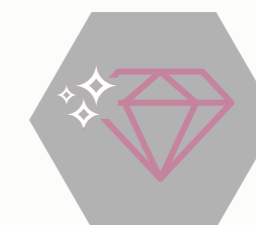
Made from conservatory and home extension quality products, Garden Rooms from Ultraframe stand the test of time. All components are guaranteed for 10 years by Ultraframe. Our Gardens Rooms are intended for use with grey claddings, whether you choose cement boards (e.g. Marley Cedar) or uPVC claddings, they are low maintenance and won't fade quickly like alternative timber claddings.



FADE FREE
Won't fade like cedar clad alternatives



BRIGHT
Cost effective, integrated rooflights



DURABLE
Building Regulation approved parts with a 30+ year life span



FAST
Available on a 10-day lead time, watertight in less than a day



ENERGY EFFICIENT
Twice the thermal performance of other premium garden rooms

	Building Regulation Requirement	Ultraframe Garden Room Performance	Premium Garden Rooms Performance
Roof	0.18	0.16	*0.31
Walls	0.27	0.17	*0.35

*estimation of standard U-Value

Contents

Provided by Ultraframe	4	Recommended by Ultraframe	17
Planning permission details	5	Electrics	19
The Studio design	6	Opening sizes	20
The Tall Studio design	8	Glass	21
The Pavilion design	10	Bases	22
The Premium Pavilion design	12	How to calculate materials	24
Specification guide	14	Order form	27

Provided by Ultraframe



Roof



Columns



Wall panels
Breathable membrane, plus vertical battens for easy cladding fixing



Fascia



Glass
Conservaglass Standard Blue.
(Can be supplied unglazed)

Not Provided By Ultraframe

- Plasterboard
- Doors
- Base
- Cills
- Claddings
- Windows
- Electrics
- Windposts

Planning Permission

Planning permission is not required providing that:

- If the edge is within 2m of a boundary the height does not exceed 2500mm
- The Garden Room is smaller than 25m²
- Once completed at least half the garden remains free from building structures including sheds
- On duo pitch roofs (The Pavilions) if the edge is more than 2m away from the boundary the eaves height is less than 2500mm and the entire height is less than 4000mm
- On single pitch roofs (The Studios) if the edge is more than 2m away from the boundary the entire height is less than 3000mm
- The Garden Room is stand alone (does not use an outbuilding for a host wall)

Additional rules apply for listed buildings, areas of outstanding natural beauty, conservation areas, world heritage sites, national parks and designated land. The studio has a height of 2500mm and does not need planning permission. All other designs may need planning permission if close to a boundary. All set sizes on Ultraframe Garden Rooms are under 25m² to comply with planning legislation.

For more information visit www.planningportal.gov.uk



The Studio



The Tall Studio



The Pavilion



The Premium Pavilion

Garden Room Design	Planning Permission Required (Within 2m of the boundary)	Planning Permission Required (Beyond 2m of the boundary)
The Studio	No	No
The Tall Studio	Yes	No
The Pavilion	Yes	No
The Premium Pavilion	Yes	No

The Studio

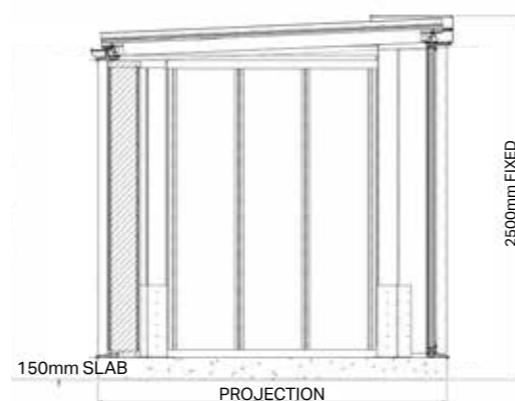
Perfect for when the Garden Room may be located close to a boundary, The Studio is contemporary and compact. Our lowest cost option, The Studio's simple reverse lean-to design maximises the 2500mm height at the front and does not need planning permission.

Key Features

- Reverse lean-to roof (2.5° pitch) with 2 optional fixed rooflights.
- 2500mm maximum height (no planning permission required)
- 2 tier flat fascia – anthracite grey
- 4 corner columns clad in anthracite grey aluminium

Sizes

- Projection: 2400mm or 3600mm
- Width: 3600mm, 4200mm, 4800mm or 6000mm



Design Options: There are 3 different design options on The Studio



Right hand corner
2 walls, full height glazing on left hand side, doors and windows to front



Left hand corner
2 walls, full height glazing on right hand side, doors and windows to front



3 full walls
Windows and doors to the front

Rooflights



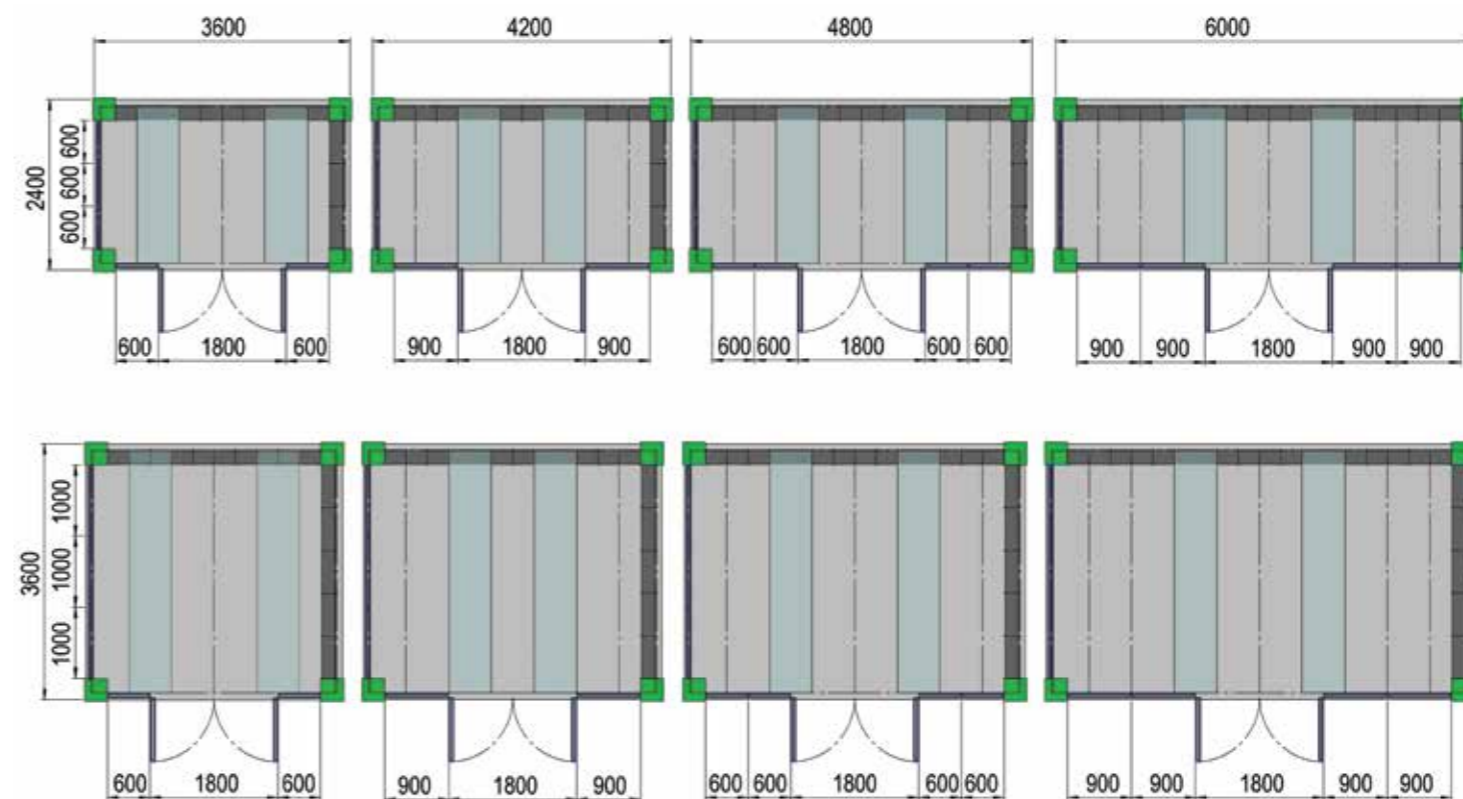
Solid roof with no fixed rooflights



2 rectangular fixed rooflights
Supplied glazed or unglazed

Layouts

The right hand corner layouts below are shown here with fixed rooflights. Please note the rooflight positions are fixed.



Key:

- Wall panels
- Fixed rooflights
- Insulated corner columns
- Glazed walls
- Insulated roof panels

The Tall Studio

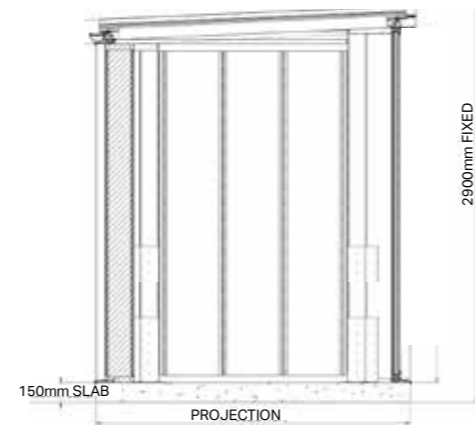
The Tall Studio is contemporary and compact, but has extra room height if needed for added versatility, for example in a home gym. The Tall Studio's simple reverse lean-to design maxes out at 2900mm at the front.

Key Features

- Reverse lean-to roof (2.5° pitch) with 2 optional fixed rooflights
- 2900mm maximum height
- 2 tier flat fascia – anthracite grey
- 4 corner columns clad in anthracite grey aluminium

Sizes

- Projection: 2400mm or 3600mm
- Width: 3600mm, 4200mm, 4800mm or 6000mm



Design options: There are 3 different design options on The Tall Studio



Right hand corner
2 walls, full height glazing on left hand side, doors and windows to front



Left hand corner
2 walls, full height glazing on right hand side, doors and windows to front



3 full walls
Windows and doors to the front

Rooflights



Solid roof with no fixed rooflights

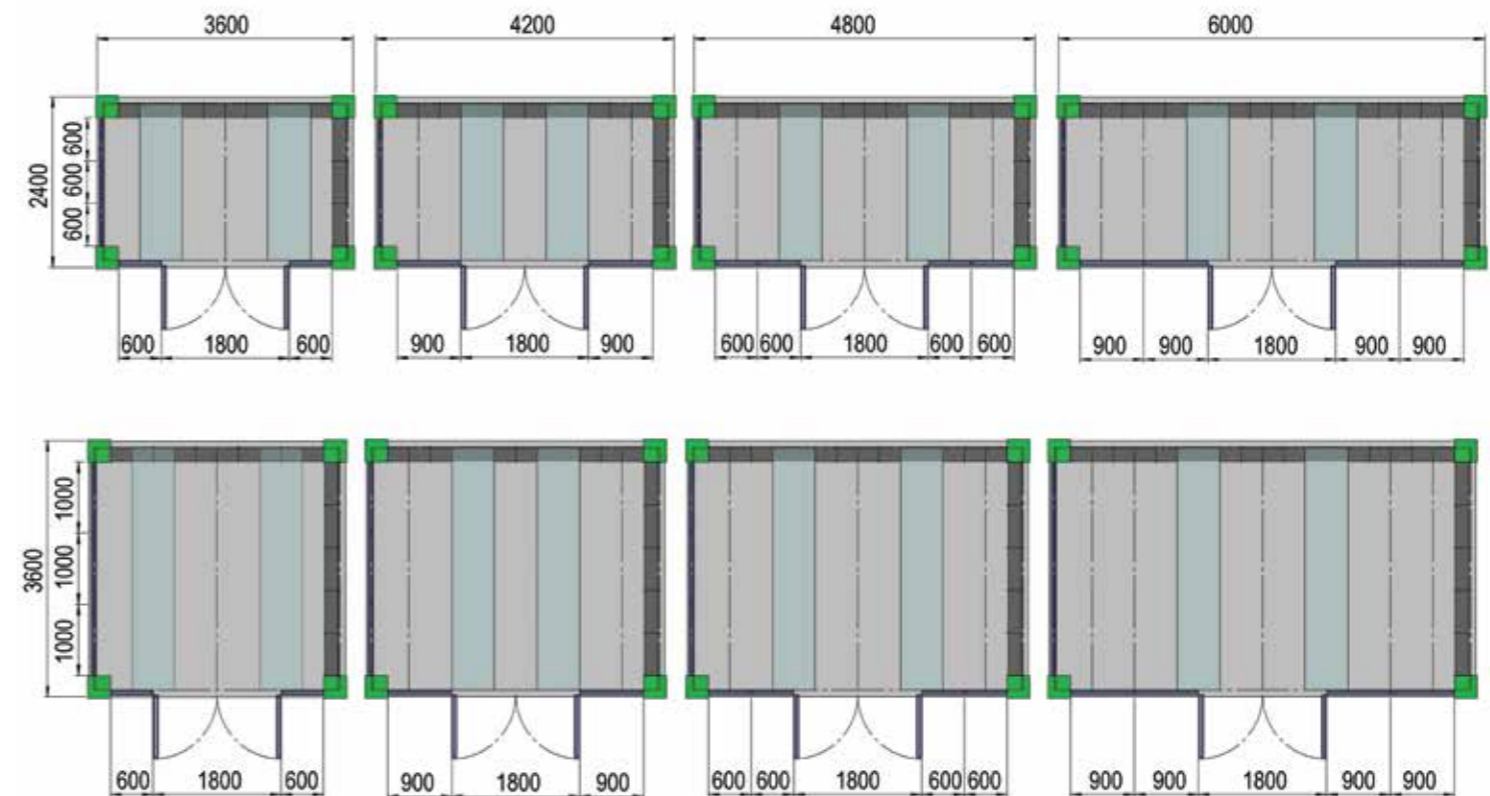


2 rectangular fixed rooflights
Supplied glazed or unglazed

Window Configuration shown is our preferred option, other configurations are possible.

Layouts

The right hand corner layouts below are shown here with fixed rooflights. Please note the rooflight positions are fixed.



Key:

- Wall panels
- Glazed walls
- Fixed rooflights
- Insulated roof panels
- Insulated corner columns

The Pavilion

The Pavilion makes a more traditional statement with the look and feel of an orangery. Spacious in design, The Pavilion has the option for 4 fixed rooflights to bring more natural light to the Garden Room.

Key Features

- Double hipped Georgian roof with 4 optional fixed rooflights
- Fixed 25 ° pitch (except on 3600mm x 3600mm)
- 2 tier flat fascia – anthracite grey
- 4 corner columns clad in anthracite grey aluminium

Sizes

- 2400mm or 3600mm projection
- 4 widths (3600mm, 4200mm, 4800mm, 6000mm)

Design options: There are 3 different design options for The Pavilion



Right hand corner
2 walls, full height glazing on left hand side, doors and windows to front



Left hand corner
2 walls, full height glazing on right hand side, doors and windows to front



3 full walls
Windows and doors to the front

Rooflights



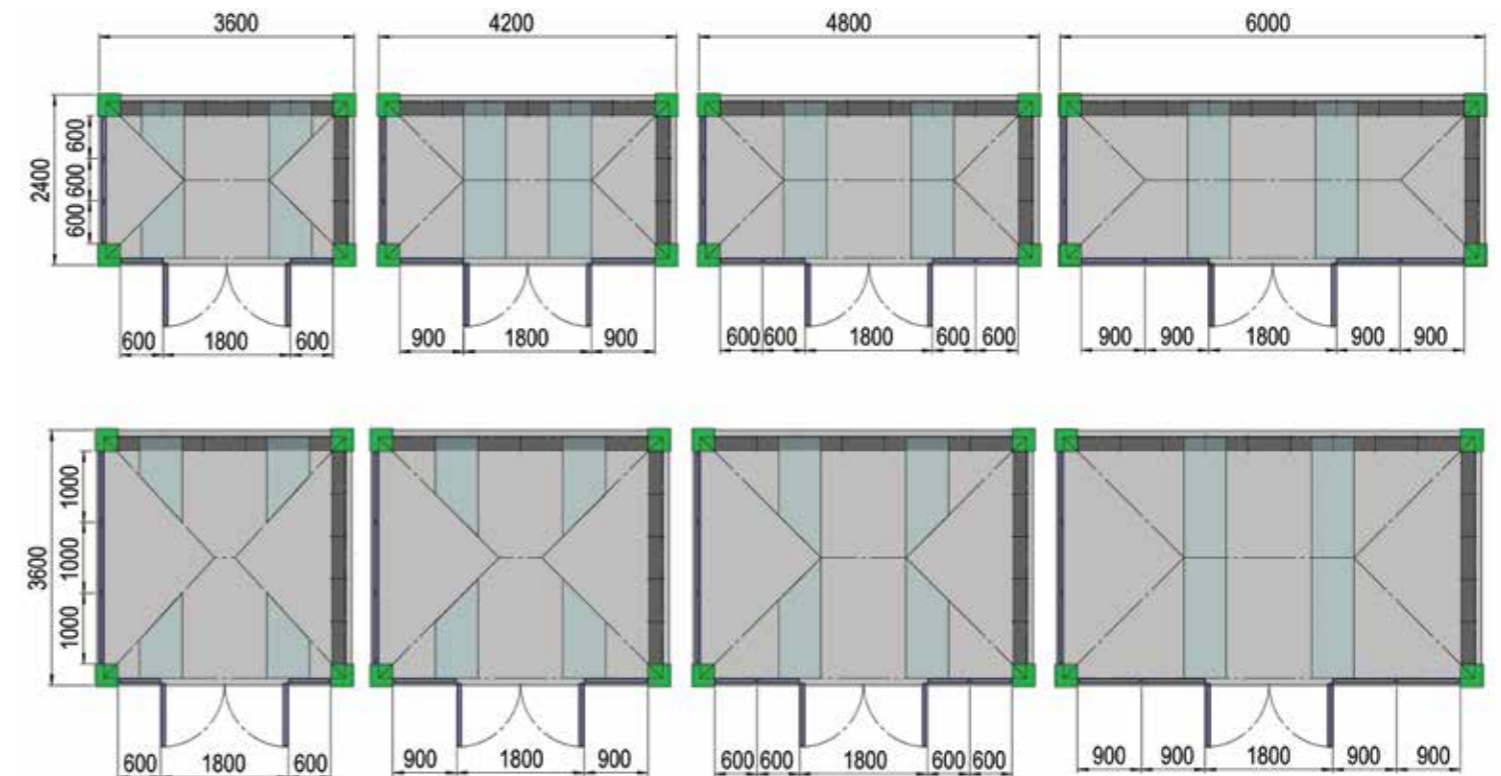
Solid roof with no fixed rooflights



4 fixed rooflights
Supplied glazed or unglazed

Layouts

The right hand corner layouts below are shown here with fixed rooflights. Please note the rooflight positions are fixed.



Key:

- Wall panels
- Glazed walls
- Fixed rooflights
- Insulated roof panels
- Insulated corner columns

The Premium Pavilion

Even more special than our standard Pavilion, the Premium Pavilion uses inline insulated columns to break up the side elevations with windows. These columns not only make a style statement but add thermal performance, ensuring The Pavilion retains heat really well even in cold temperatures.

Key Features

- Double hipped Georgian roof with 4 optional fixed rooflights
- Fixed 25 ° pitch (except on 3600mm x 3600mm)
- Inline columns and full height glazing on the sides (1 column per elevation on the 2400mm projection and 2 columns on the 3600 projection)
- 2 tier flat fascia – anthracite grey
- 4 corner columns clad in anthracite grey aluminium

Sizes

- 2400mm or 3600mm projection
- 4 widths (3600mm, 4200mm, 4800mm, 6000mm)

Design options: There are 3 different design options on The Premium Pavilion



Right hand corner

2 walls, full height glazing with in line columns on left hand side, doors and windows to front



Left hand corner

2 Walls, full height glazing and in line columns on right hand side, doors and windows to front



1 full back wall

1 full back wall and 3 glazed walls, with inline columns to both sides

Rooflights



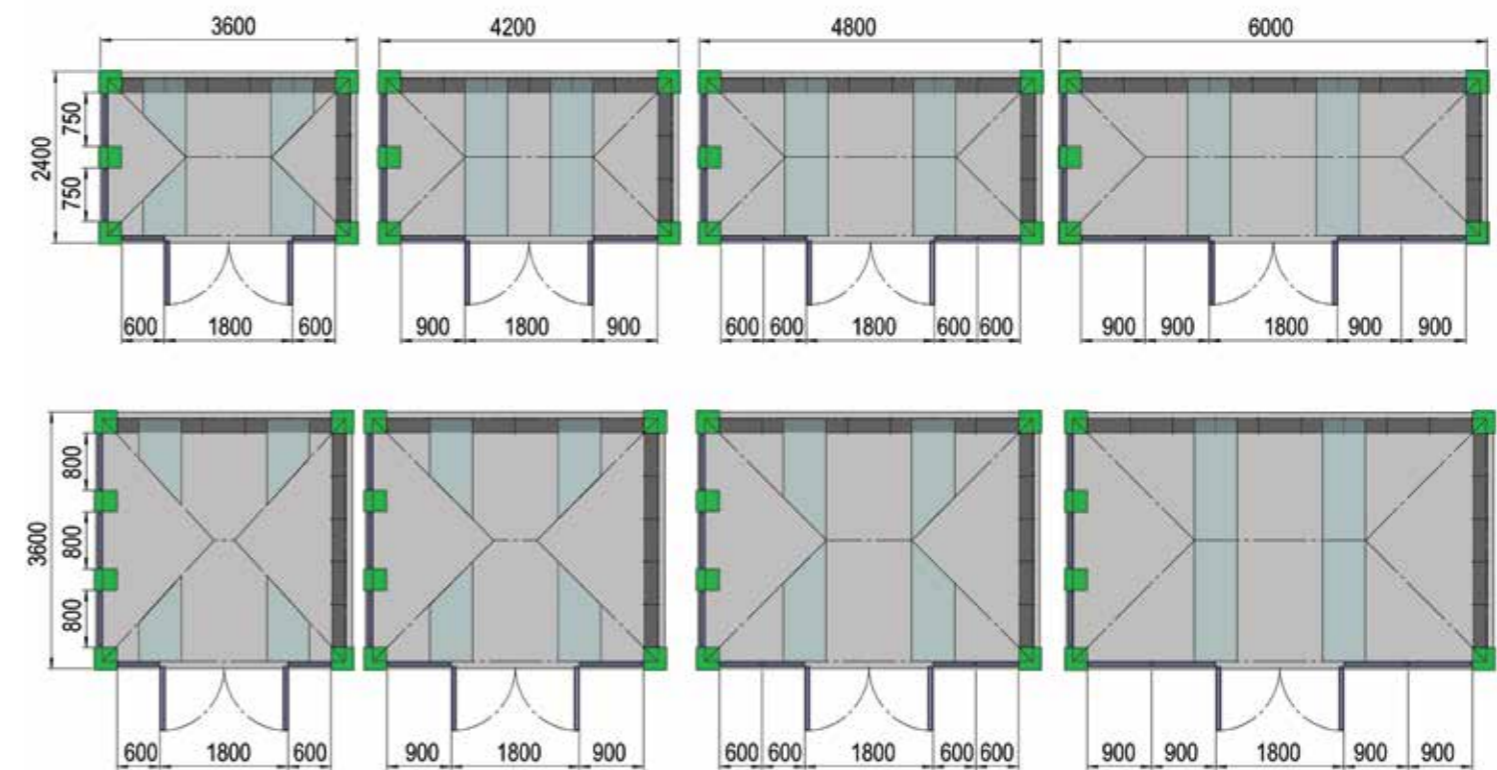
Solid roof with no fixed rooflights



4 fixed rooflights
Supplied glazed or unglazed

Layouts

The right hand corner layouts below are shown here with fixed rooflights. Please note the rooflight positions are fixed.



Key:

- Wall panels
- Glazed walls
- Fixed rooflights
- Insulated roof panel
- Insulated corner columns & insulated inline columns

Specification Guide

Walls

The Garden Room walls are made from Ultraframe's patented wall panels that deliver a U-Value of 0.17 which is the most energy efficient garden room wall on the market.

The unique hybrid design of structural insulation combined with an i-beam structure of galvanised steel and treated timber ensures the walls are both warm and structurally strong.

The wall panels easily slot into a floor tray which is screwed to the concrete pad. The wall panels are easily clipped together in minutes giving you a rapid Garden Room installation.

The walls are supplied with breathable membrane ready for cladding which is made easy with the vertical battens that are already formed by the wall panel clips.

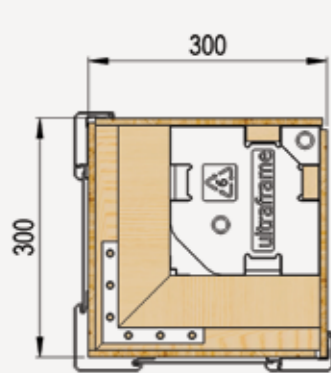


Insulated Columns

Engineered insulated corner columns give the Garden Room inner strength, solidity and warmth.

Internally the super-insulated core makes these columns 5 times more thermally efficient than similarly sized brick columns and externally they are powder coated in RAL 7016 anthracite grey to perfectly match the fascia.

The inline columns used on the sides of The Premium Pavilion create a style statement and improve energy efficiency too.



Corner column



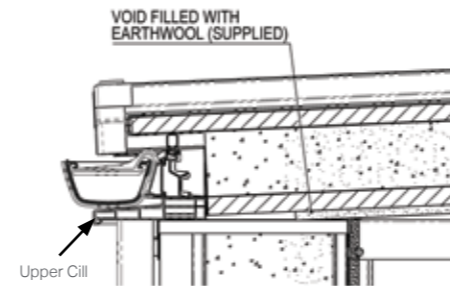
Inline columns – Premium Pavilion only

Roof

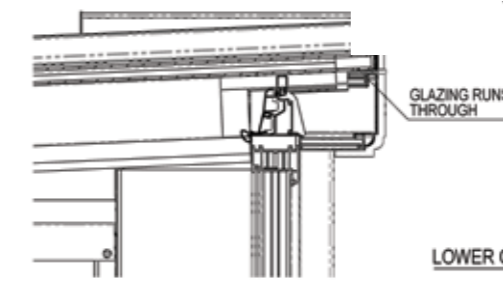
Our insulated solid roof is ideal for Garden Rooms. Externally, the roof is finished in RAL 7016 anthracite grey and glazed with insulated composite panels. Internally, it uses two separate insulation layers.

At the eaves on The Pavilion, the insulated internal pelmet engineered steelwork ladder system is used - all internal roof surfaces are then boarded (see page 18). The roof has an energy efficient U-Value of 0.16W/m2k.

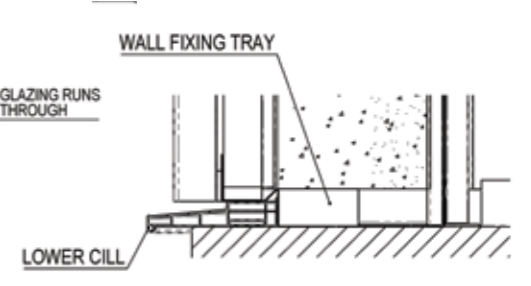
The Studio



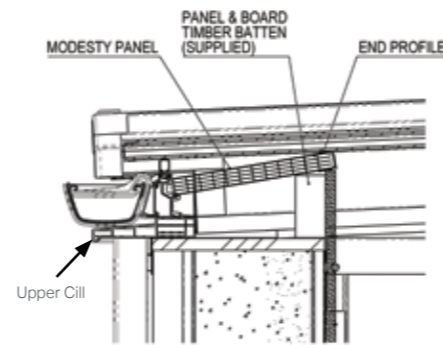
Rear wall to roof



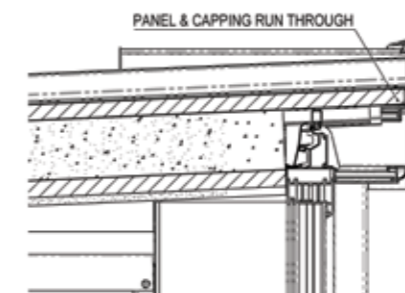
Front to fixed rooflights detail



Lower wall



Rear wall to fixed rooflights



Front frame to roof

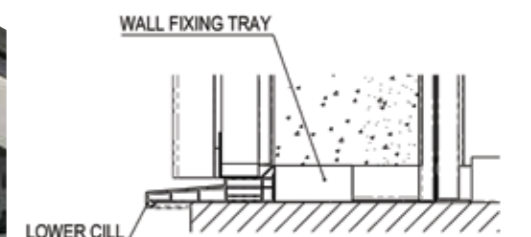
The Pavilion



Fixed rooflights to eaves beam



Hip to eaves beam

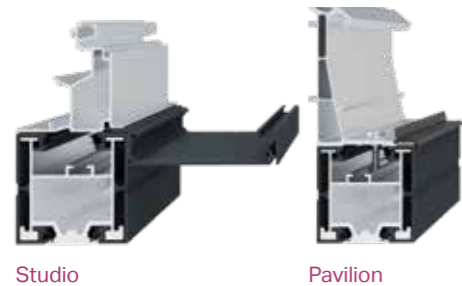


Lower wall

Bi-Fold Support Beam

If you would like to have bi-fold or sliding doors along the front, a bi-fold support beam will be required because the maximum unsupported opening size of the roof is only 1800mm, enough for a 2 x 900mm set of French doors. A bi-fold support beam is not required along the projection as long as the lateral stability issues below are addressed.

The bi-fold support beam is available to match the following frame colours (internal/external): white/grey and grey/grey. The maximum opening sizes for doors are shown in the table below.



Studio

Pavilion

Garden Rooms projection	Maximum size opening			
	2400mm	3600mm	2400mm	3600
Maximum size opening under Bi-fold support/mm	3080	2783	3351	3028
	BASED ON SNOW DEFLECTION OF 5 MM		BASED ON SNOW DEFLECTION OF 7 MM	

Lateral Stability

In order to avoid any lateral stability issues, either wind posts or 500mm windows either side of each column on the elevation with the doors are required.

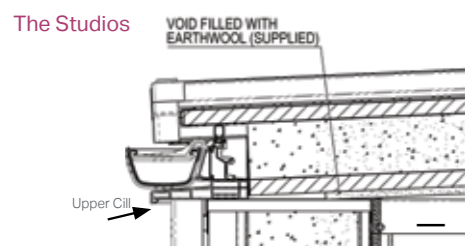
Windposts must be placed between the column and the window frame and anchored to the ground, the column and the window frame. These must be clad to match the window frames. Windposts and claddings not provided by Ultraframe.

Cill Detail (not supplied)

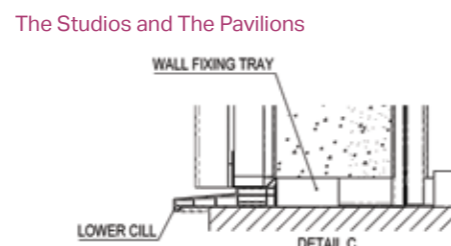
A cill is required around the base of each Garden Room - we recommend 30mm x 150mm. An upper cill is required for The Studio and The Tall Studio only. It is required on three sides (both side elevations plus the back wall).

Cill internal sizes (mm)					
Projection	Width	The Studios & The Pavilions		The Studios Only- Upper cills	
		Internal Width	Internal Projection	Internal Width Upper	Internal Projection
2400	3600	3402	2202	3402	2005
	4200	4002		4002	
	4800	4602		4602	
	6000	5802		5802	
3600	3600	3402	3402	3402	3205
	4200	4002		4002	
	4800	4602		4602	
	6000	5802		5802	

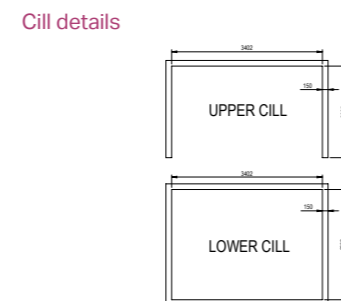
We recommend cills should be 30mm x 150mm. We also recommend welded corner joints with splits and joiners on the straight run.



Rear wall to roof



Lower wall detail



Cill details

Fascia

The 2 tier flat fascia hides end caps to give the roofline a neat finish. Aluminium and powder coated in RAL 7016 anthracite grey, the fascia matches the insulated columns and roof perfectly.



2 tier flat fascia

Claddings

Whilst Ultraframe doesn't provide claddings, the wall panel is compatible with many cladding options available on the market.

We recommend that you use RAL 7016 anthracite grey external claddings to match our anthracite grey finish. We found the Marley Cedral® claddings to be a great match.



Cedral lap



Cedral click



Wall prepared for cladding - battens supplied

The Studios

Elevation Length	External Cladding Area					
	The Studio			The Tall Studio		
	Width	2400 Width	3600 Width	Width	2400 Width	3600 Width
		Height			Height	
2400	1792	2010	1958	1792	2390	2338
3600	2992			2992		
4200	3592			3592		
4800	4192			4192		
6000	5392			5392		

The Pavilions

Elevation Length	External Cladding Area	
	The Pavilion	
	Width	Height
2400	1792	2400 Width
3600	2992	2139
4200	3592	
4800	4192	
6000	5392	

Internal Boarding

We recommend you avoid plastering if possible to help prevent any damp issues if the room is left unheated. We found that fermacell offers a good dry lining alternative solution that minimises wet trades on site, increases design flexibility and speeds up the build time.



Areas (m² needed to be covered by internal board):

The Studio

	3600	4200	4800	6000
2400	14.30	15.60	16.80	19.30
3600	23.23	25.23	27.13	31.13

The Studio - left or right hand corner

	3600	4200	4800	6000
2400	20.32	22.82	25.23	30.14
3600	29.24	32.45	35.55	41.97

The Small Studio - 3 walls

The Tall Studio

	3600	4200	4800	6000
2400	15.74	17.04	18.24	20.74
3600	25.62	27.62	29.52	33.52

The Tall Studio - left or right hand corner

	3600	4200	4800	6000
2400	22.95	25.69	28.34	33.73
3600	32.83	36.28	39.62	46.52

The Tall Studio - 3 walls

The Pavilion

	3600	4200	4800	6000
2400	20	40	40	40
3600	30	40	40	40

The Pavilion - left or right hand corner

	3600	4200	4800	6000
2400	30	50	50	50
3600	30	50	50	50

The Pavilion - 3 walls

The Premium Pavilion

	3600	4200	4800	6000
2400	20	40	40	40
3600	30	40	40	40

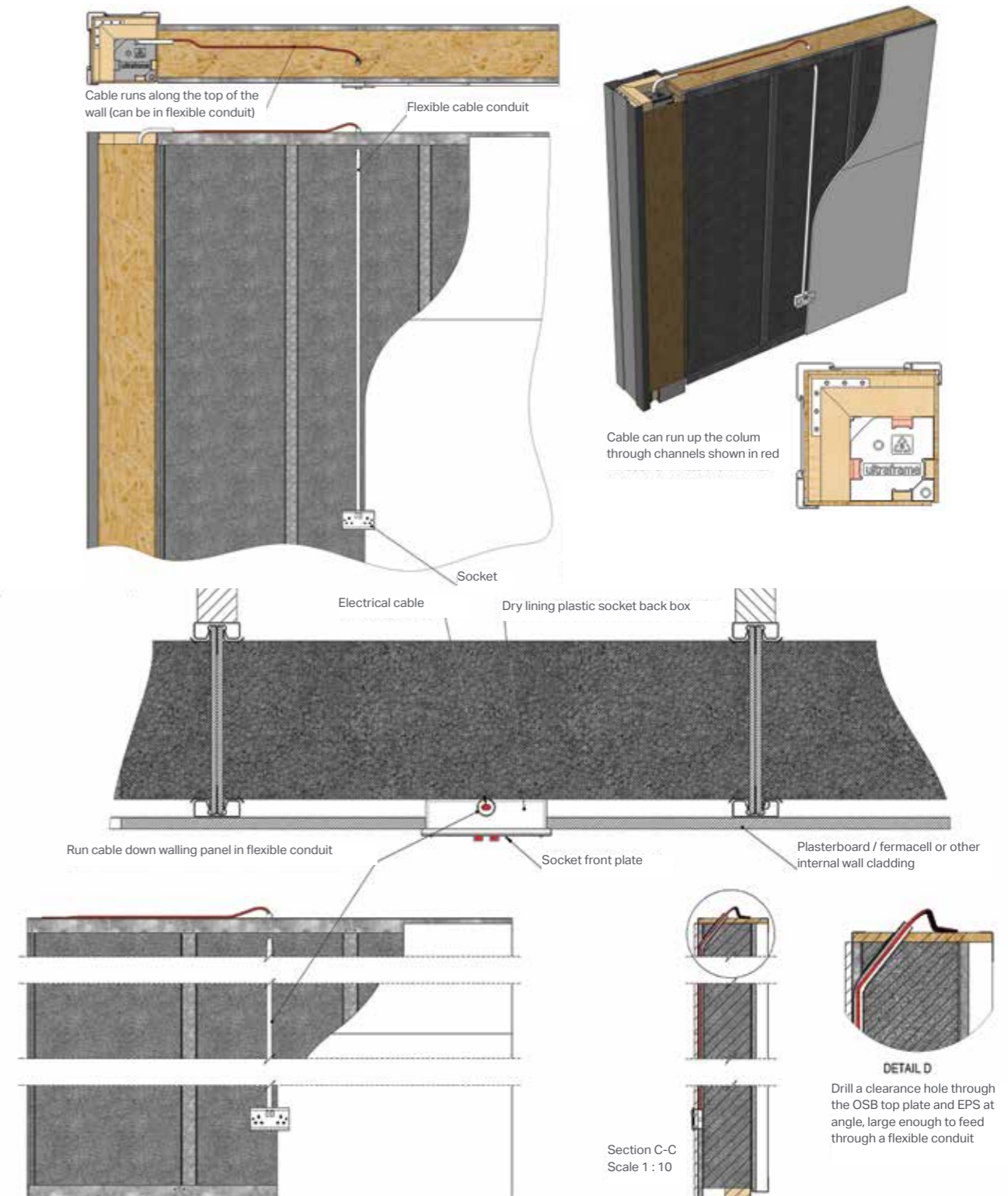
The Premium Pavilion - left or right hand corner

	3600	4200	4800	6000
2400	10	20	20	20
3600	10	20	20	20

The Premium Pavilion - Back wall

Electrics

We recommend that you run cable up through columns and along the top of the wall, do this as a first fit. **The cable needs to run in conduit, you must not let cabling come into direct contact with the EPS.** The conduit is readily available from any builders merchant.



DISCLAIMER: WIRING PVC SHEATHING SHOULD NOT COME INTO CONTACT WITH THE EPS. RUN WIRING INSIDE CONDUIT TO PREVENT CONTACT.

Lighting

We always recommend that electrics and cabling are run in a flexible conduit, you must not let cabling come into direct contact with the EPS or roof insulation. The first fix cabling can be run into the Garden Room and along the top of the wall (as shown in the wiring section) and then directed to the location of the required light up the sides of the roof bars with enough cable to access through the internal boarding once fitted. Low energy and low heat lighting is recommended.

The Studio

We recommend slim surface mounted LED lights, wall mounted up/down lighters or perimeter channel LED light strips. Determine the location of the lights before the insulation is fitted. The cabling, which must be in flexible conduit and not come into contact with the insulation, should run along the top of the wall and up the bars adjacent to where the light will be fitted.



The Pavilion (and Pavilion Premium)

We recommend that low energy, low heat LED lighting is fitted in the internal pelmet or the internal ridge board, or surface mounted fittings on either the ceiling or walls.

In all circumstances consult and use a qualified "Part P" electrician prior to fitting your chosen light fittings and sockets.



Glass

Ultraframe Garden Rooms with rooflights can be supplied with glass or unglazed. Conservaglass is supplied at a net price of £71.44m2 (tier 1 / standard blue glass).

Specification is as follows

- U-Value 1.2
- Light transmission 42%
- Solar rejection 60%
- UV protection 83%
- Toughened to BS EN 12150-1
- Manufactured to BE EN 1279-2
- 10 year guarantee
- Self clean
- Argon cavity filled
- Warm edge spacer
- 24mm
- Blue

Glass Area (m2)

The Studios

	3600	4200	4800	6000
2400	2.58	2.58	2.58	2.58
3600	3.96	3.96	3.96	3.96

The Pavilions

	3600	4200	4800	6000
2400	2.10	2.88	2.88	2.88
3600	3.19	3.62	3.62	4.40

Window Opening Sizes

Windows and doors are NOT supplied by Ultraframe, however, below are the opening sizes of each Garden Room design so that you can easily specify them.

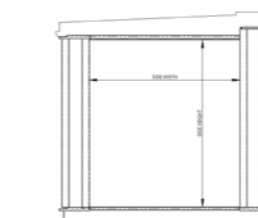
Projection	Width	The Studio				The Tall Studio				The Pavilion				The Pavilion Premium
		Front Elevation		Side Elevation		Front Elevation		Side Elevation		Front Elevation		Side Elevation		Side Elevation
		Height	Width	Height	Width	Height	Width	Height	Width	Height	Width	Height	Width	Width Between Inline Columns
2400	3600	2170	3000	2040	1800	2550	3000	2420	1800	2170	3000	2170	1800	750
	4200		3600											
	4800		4200											
	6000		5400											
3600	3600	2170	3000	1989	3000	2550	3000	2369	3000	2170	3000	2170	3000	800
	4200		3600											
	4800		4200											
	5400		5400											

Recommend cill should be 30mm x 150mm. We also recommend welded corner joints with splits and jointers on the straight run.

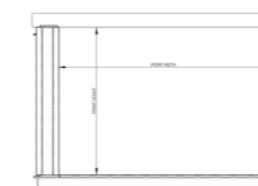
These values are total aperture sizes and do not include any deductions for frame add-ons on the lower cill. The Studios require an upper cill which sits above these apertures. Please note that when a bi-fold eaves is specified, a 70mm deduction is required off the front elevation frame height. The sizes provided include a 6mm deduction to allow for fitting tolerances.

Window Frame Aperture Layout

The Studio & The Tall Studio

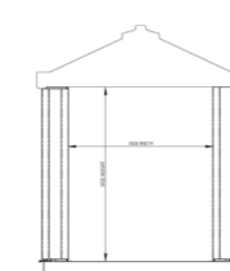


Side elevation

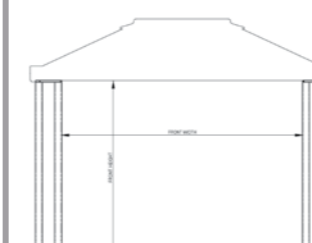


Front elevation

The Pavilion

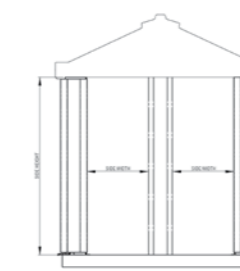


Side elevation

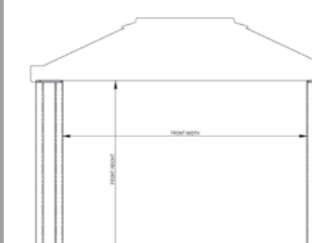


Front elevation

Premium Pavilion 2400mm projection

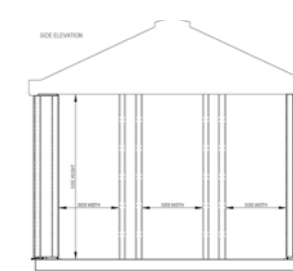


Side elevation

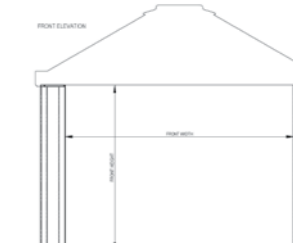


Front elevation

Premium Pavilion 3600mm projection



Side elevation



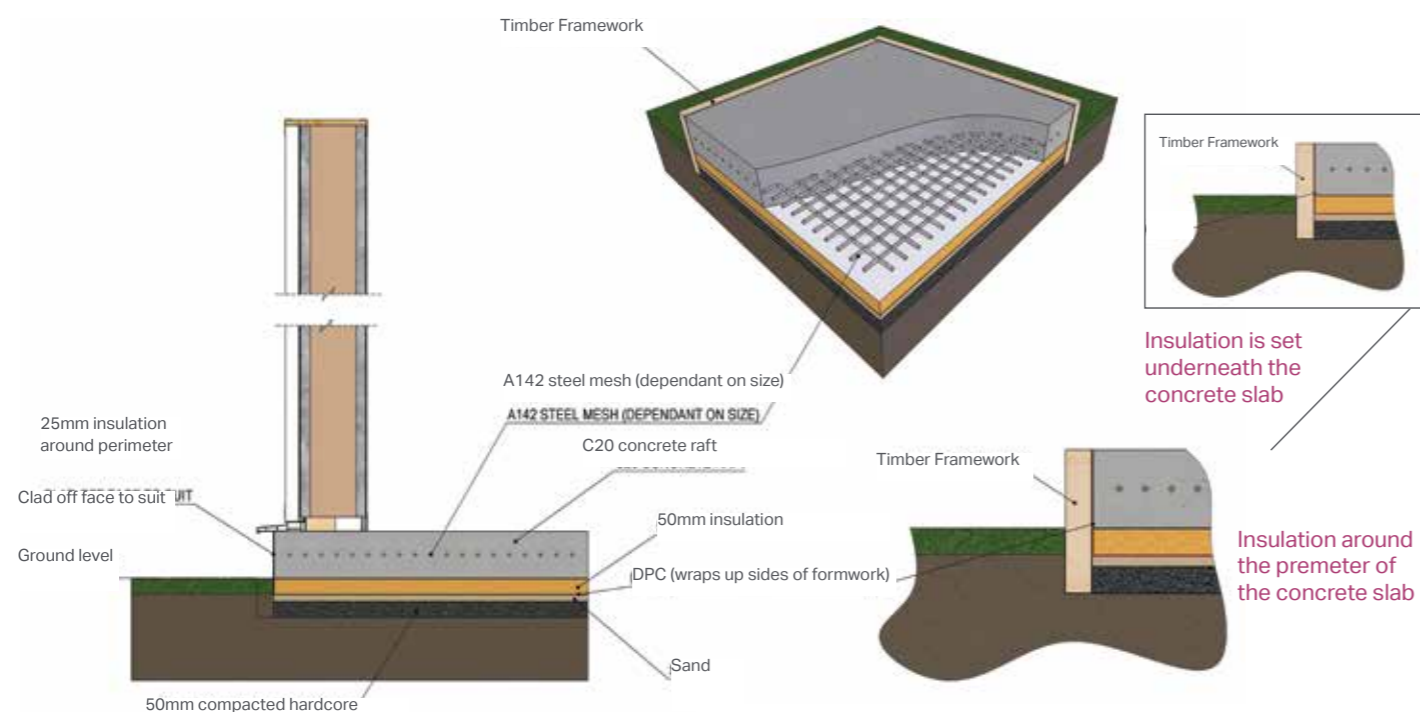
Front elevation

Bases

We recommend a 150mm insulated slab in order to avoid rising damp from the ground and ensure a solid foundation for the Garden Room. 150mm has been selected so that the overall height of The Studio does not exceed the 2500mm height required to avoid planning permission.

The timber formwork is a temporary shuttering into which the concrete is poured. Once the concrete has set, the formwork is removed. The sequence for the base is as follows:

1. Excavate the area slightly larger than the Garden Room overall sizes.
2. Build timber formwork to the size of the Garden Room (inside dimensions of formwork), ensuring square (check diagonals).
3. If insulating around perimeter of slab, take the insulation thickness into consideration for the overall size.
4. Fill the base of the foundation with hardcore and compact.
5. Add a layer of sand and compact. Fit DPC to cover the area and lap up the sides of the formwork.
6. Insert 50mm sheet insulation.
7. Pour C20 concrete raft (depending on area an A142 steel mesh will be required)
8. Once fully set, the Garden Room installation can be carried out.



Bases

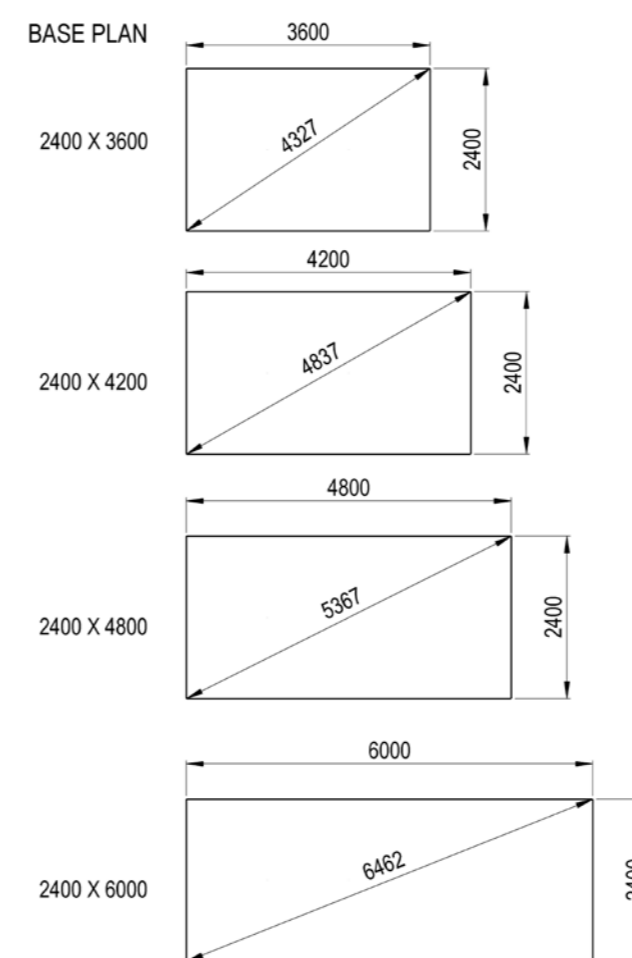
External Base Size

2400mm x 3600mm	2400mm x 4200mm	2400mm x 4800mm	2400mm x 6000mm
3600mm x 3600mm	3600mm x 4200mm	3600mm x 4800mm	3600mm x 6000mm

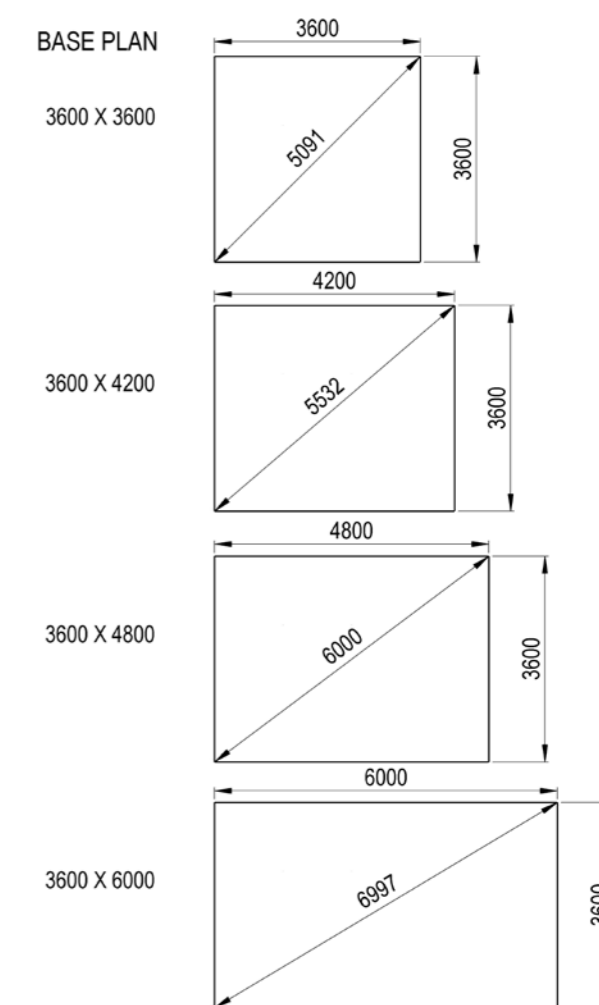
Internal Floor Size

1800mm x 3000mm	1800mm x 3600mm	1800mm x 4200mm	1800mm x 5400mm
3000mm x 3000mm	3000mm x 3600mm	3000mm x 4200mm	3000mm x 5400mm

Base plan 2400mm projection



Base plan 3600mm projection

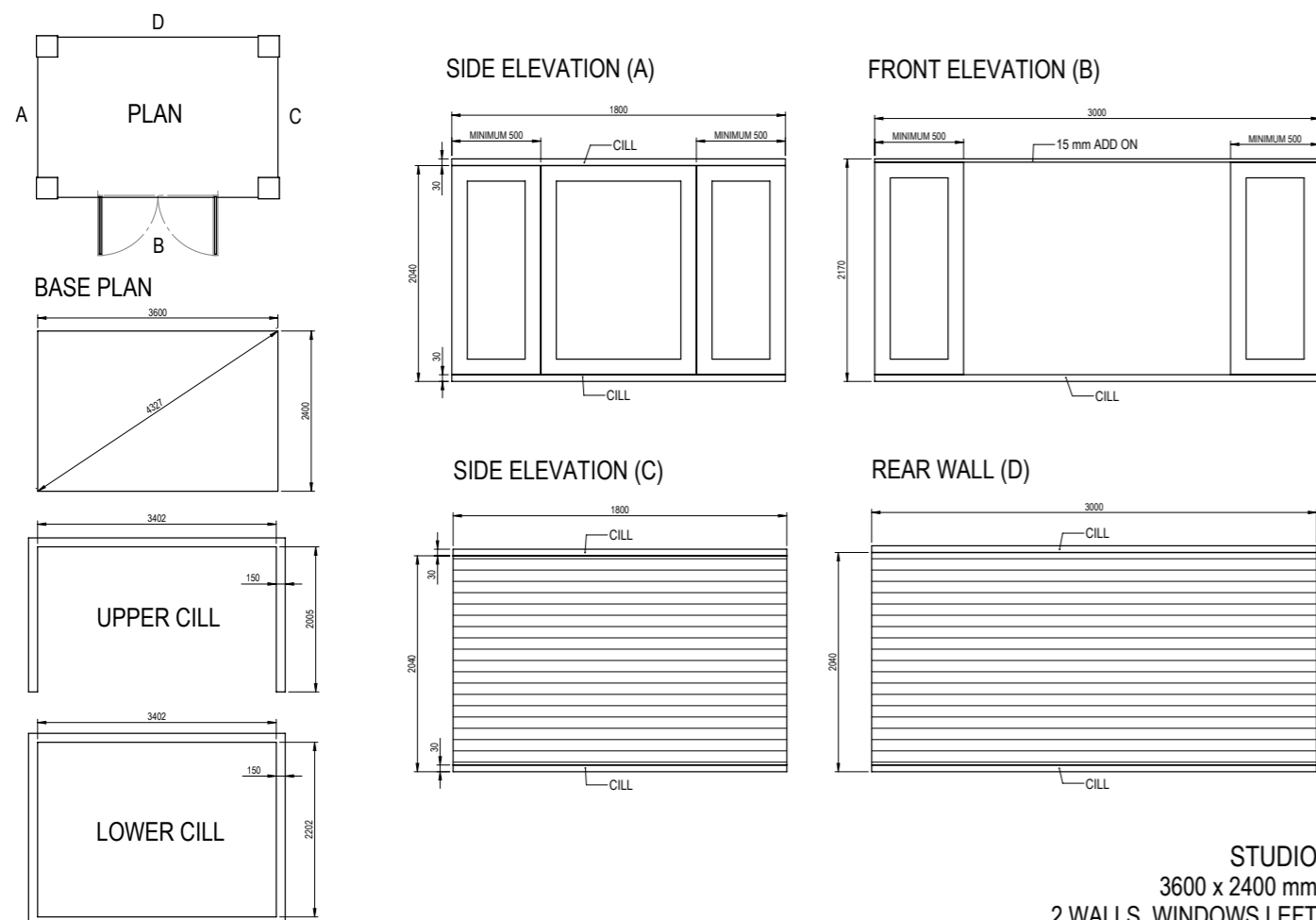


How to calculate your materials required?

To help you calculate the materials required for each job, we will provide details of critical dimension on your order confirmation.

You can use this guide to determine the critical dimensions too as outlined in the example below - a Right Hand Corner Studio 3600,mm x 2400mm where a bi-fold support beam has been selected along the front elevation.

Order confirmation details



How to calculate your materials required?

How to calculate materials using this guide.

Base

The measurements below indicate the overall projection x width sizes from page 23. The diagonal check dimension to ensure that the base is square is also provided on the confirmation report.

External Base Size

2400mm x 3600mm	2400mm x 4200mm	2400mm x 4800mm	2400mm x 6000mm
3600mm x 3600mm	3600mm x 4200mm	3600mm x 4800mm	3600mm x 6000mm

Cill

The cill measurements below use the internal width and internal projection calculations taken from the table on page 16. The recommended minimum cill is 150mm, however by using the internal frame dimension allows for slightly larger cills if required. For the Studio, there is an upper and lower cill. The upper cill is a 'C' shape on 3 sides of the structure.

Cill internal sizes (mm)					
Projection	Width	The Studios & The Pavilions		The Studios Only- Upper cills	
		Internal Width	Internal Projection	Internal Width Upper	Internal Projection
2400	3600	3402	2202	3402	2005
	4200	4002		4002	
	4800	4602		4602	
	6000	5802		5802	
3600	3600	3402	3402	3402	3205
	4200	4002		4002	
	4800	4602		4602	
	6000	5802		5802	

We recommend cills should be 30mm x 150mm. We also recommend welded corner joints with splits and jointers on the straight run.

Window & door apertures

To calculate the window apertures, chose your Garden Room projection and width from the left-hand columns of the table on page 20. To find out the required apertures for the different elevations, based on the Garden Room type, cross reference the size with type and elevation.

Projection	Width	The Studio				The Tall Studio				The Pavilion				The Pavilion Premium
		Front Elevation		Side Elevation		Front Elevation		Side Elevation		Front Elevation		Side Elevation		Side Elevation
		Height	Width	Height	Width	Height	Width	Height	Width	Height	Width	Height	Width	Width Between Inline Columns
2400	3600	2170	3000	1800	2040	1800	3000	2420	1800	2170	3000	1800	750	
	4200		3600				3600							
	4800		4200				4200							
	6000		5400				5400							
3600	3600	2170	3000	3000	1989	3000	3000	2369	3000	2170	3000	3000	800	
	4200		3600				3600							
	4800		4200				4200							
	5400		5400				5400							

Please note: There values are total aperture sizes and do not include any deductions for frame add-ons on the lower cill. The Studios require an upper cill which sits above these apertures. Please note that when a bi-fold eaves is specified, a 70mm de-duction is required off the front elevation frame height.

How to calculate your materials required?

Claddings

The cladding area can be calculated by multiplying the width and height shown in the table on page 17. In this case the cladding area for back wall is 2010mm x 2992 = 6.01m² and for the right hand side elevation is 2010mm x 1792mm = 3.6m². Total cladding area is 9.61m².

Elevation Length	External Cladding Area					
	The Studio			The Tall Studio		
	Width	2400 Width	3600 Width	Width	2400 Width	3600 Width
	Height			Height		
2400	1792	2010	1958	1792	2390	2338
3600	2992			2992		
4200	3592			3592		
4800	4192			4192		
6000	5392			5392		

Internal boardings

The table on page 18 shows that a total of 14.30m² of internal boarding is required for a right hand corner The Studio.

Areas (m² needed to be covered by internal board):

The Studio

	3600	4200	4800	6000
2400	14.30	15.60	16.80	19.30
3600	23.23	25.23	27.13	31.13

ORDER FORM

Contact details:

partsales@ultraframe.co.uk OR 01200 452 906

ORDER

QUOTE

ACCOUNT No.

Company Name

Order Number

JOB REFERENCE

Company Contact

Telephone No.

Email

Delivery Address

.....

.....

POSTCODE

Delivery Date Req

Quotation Ref

Delivery To Site Req Yes No

HOW TO PLACE AN ORDER FOR GARDEN ROOM

LAYOUT

1. The Studio



2. The Tall Studio



3. The Pavilion



4. The Premium Pavilion



DESIGN

STUDIO Studio Tall Studio

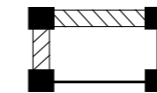
PAVILION Pavilion Premium Pavilion

FIXED ROOFLIGHTS Yes No

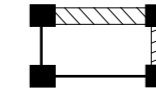
If YES to fixed rooflights: Conservaglass Standard Blue Unglazed (24mm)

LAYOUT

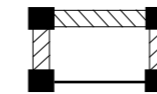
Left Hand Corner with two solid walls



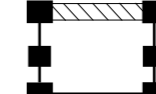
Right Hand Corner with two solid walls



3 Walls



1 solid back wall and both sides with inline columns (Premium pavilion only)



KEY	
Super-Insulated Column	
Walls	
Windows/ Doors	
Inline Column	

SIZE

PROJECTION 2400mm 3600mm

WIDTH 3600mm 4200mm 4800mm 6000mm

COLOUR OF FRAMES (External/ Internal) Grey/Grey Grey/White

BI-FOLD SUPPORT BEAM REQUIRED (Only available for the front elevation) Yes No

Job No.:3598

Please sign and return to

partsales@ultraframe.co.uk

SIGNED

DATE

Gardenrooms

By Ultraframe

ultraframegardenrooms.com

Job No. 7085 Code: GRSG001 Garden Rooms Spec Guide 04/21

It is Ultraframe's policy to continually seek to improve its products, processes and services and we reserve the right to change specifications without prior notice.
We have been trading for over 35 years and strive to deliver unrivalled quality and service.